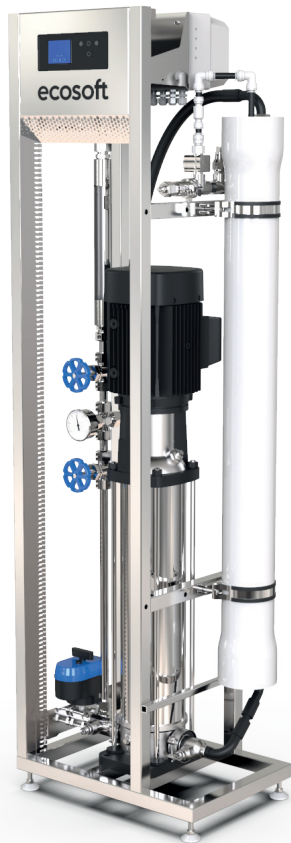


ECOSOFT MO6500 4" REVERSE OSMOSIS SYSTEM FOR BRACKISH WATER



APPLICATIONS

Process water, rinse water, steam boilers, heating and cooling circuits, agriculture, desalination, food and beverage, utility water treatment.

KEY FEATURES

- Ecosoft OC6000 controller
- Grundfos® CRN 1–30 high pressure pump
- AISI 304 stainless steel frame
- AISI 316 stainless steel piping without welding

EQUIPMENT:

- Grundfos® CRN 1–30 high pressure pump
- 450 psi membrane housing
- Ecosoft controller OC6000
- Purified water conductivity probe
- Electrical inlet valve
- Regulating needle valves
- AISI 304 Stainless steel frame
- AISI 316 Stainless steel piping

OPTION:

- High rejection Dupont Filmtec™ membrane: LC LE PRO-4040
- High rejection LG™ membrane: LG BW 4040 ES

Ecosoft reserves the right to amend the product's system architecture provided that its functionality and usability will not deteriorate

CONNECTION PORT SIZES

| | |
|--|---------------------|
| Influent water | G 1/2" |
| Permeate | G 1/2" |
| Concentrate | G 1/2" |
| Approximate weight (bare system / crated system) | 100 kg / 130 kg |
| Dimensions (bare system, W × D × H) | 490 × 340 × 1625 mm |
| Dimensions (crate, W × D × H) | 500 × 400 × 1750 mm |

ECOSOFT MO6500 4" REVERSE OSMOSIS SYSTEM FOR BRACKISH WATER

| Code | Product | Flow rate, L/h (GPH) | Membrane** |
|-----------|----------------------------|----------------------|------------|
| MO6500BI6 | Ecosoft MO6500 BWRO System | 200–300 (50–75) | 1/40 × 40 |

* Dimensions may vary ± 5%

** The system is shipped without a membrane

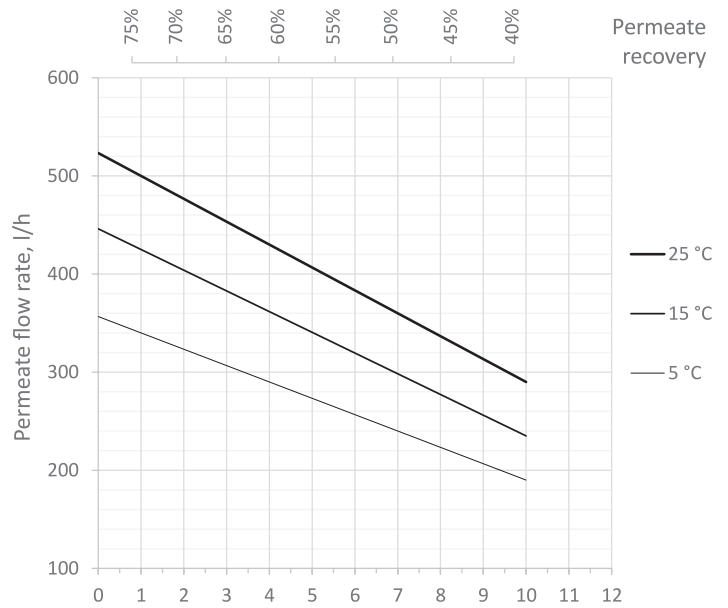
TECHNICAL SPECIFICATION

| | |
|--------------------------------|---------------------------|
| Permeate capacity ¹ | 250 L/h |
| Permeate recovery ² | depends on feed water TDS |
| Maximum TDS | 10 000 mg/L (10 g/L) |
| Influent flow demand | 400...800 L/h (service) |
| Operating pressure | 15...20 bar |
| Maximum pressure | 25 bar |
| Electrical requirements | 230 V, 50 Hz (1 ph) |
| Electrical power | 1.6 kW |

¹ depends on feed water TDS, temperature, and permeate recovery — see graph on the right

² for low scaling/fouling water

ECOSOFT MO6500 INOX RO FLOW CAPACITY GRAPH (WITH LCLE-4040 MEMBRANE)

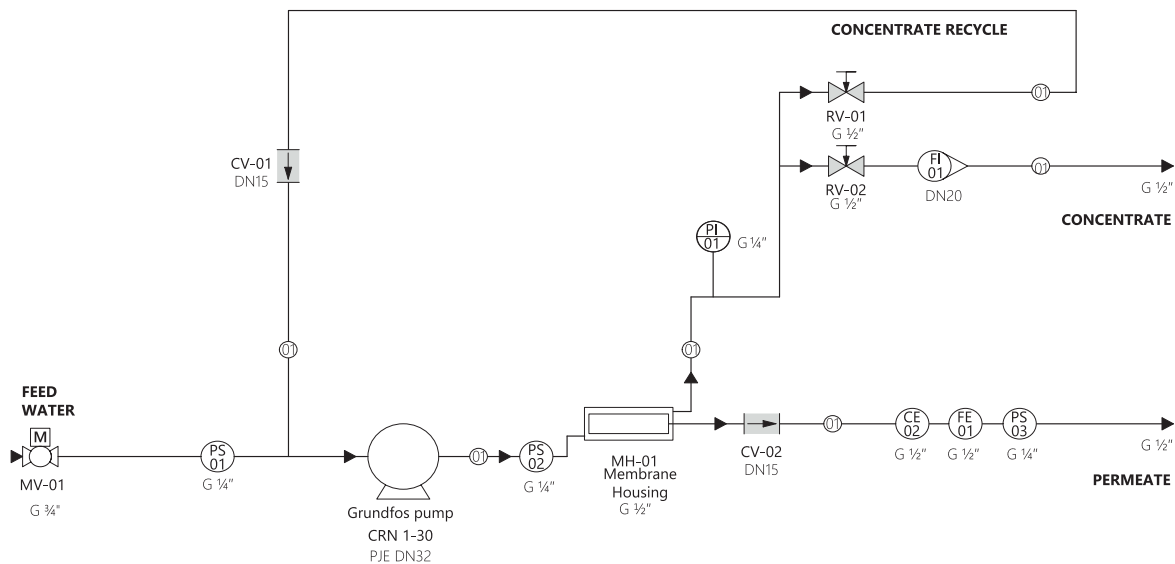


Permeate flow rates are calculated under the following conditions:

- 4 bar influent water pressure
- 0 bar backpressure in the permeate line
- fresh membranes

PIPES AND INSTRUMENTS DIAGRAM

Ecosoft MO6500B16
Reverse Osmosis System
Piping and Instrumentation Diagram



PIPES AND CONNECTIONS

—(1)— Stainless steel pipe DN15
G parallel BSPT thread
PJE coupling

VALVES

(M) Motorized Valve
(V) Needle Valve
(C) Check Valve

INSTRUMENTS

(PI) Pressure gauge
(PS) Pressure switch
(FI) Rotameter
(CE) Conductivity probe (process mount)
(FE) Flow meter (process mount)