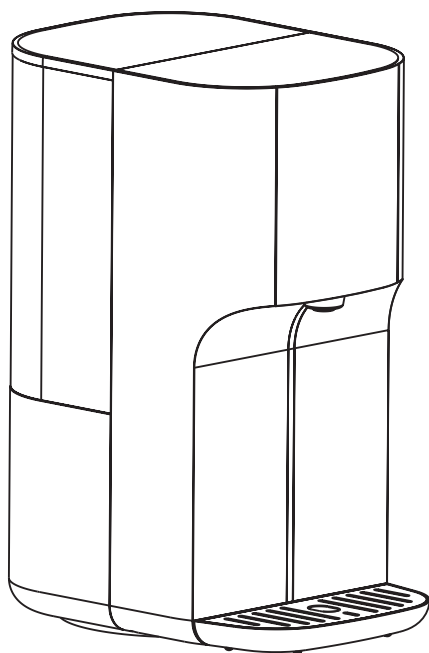


ecosoft

INSTALLER AND USER GUIDE FOR CROSS RAY COUNTERTOP REVERSE OSMOSIS FILTER



EN



Scan and find
your language



Video guide



Order a
replacement
filter

CONTENTS

1. Important Guidelines	3
2. Parts Introduction	5
3. Technical Specifications	6
4. Before the First Use	7
5. Product Dimension	8
6. Structural Diagram and Hydrographic Diagram	8
7. Electrical Schematic Diagram	9
8. Operating Instructions	9
9. Cleaning and Maintenance	12
10. Troubleshooting	14

DEAR CUSTOMER!

Thank you for choosing our products.

We want you and your family to enjoy pure drinking water. With Ecosoft filter you will forget the trouble of using large bottles. Pure spring water for drinking, cooking and making drinks will always be at hand. Please read this instruction manual before using the system.

Z
E

1. IMPORTANT GUIDELINES

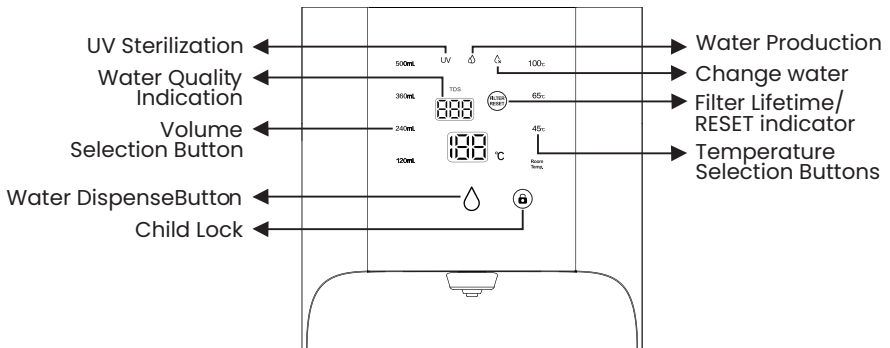
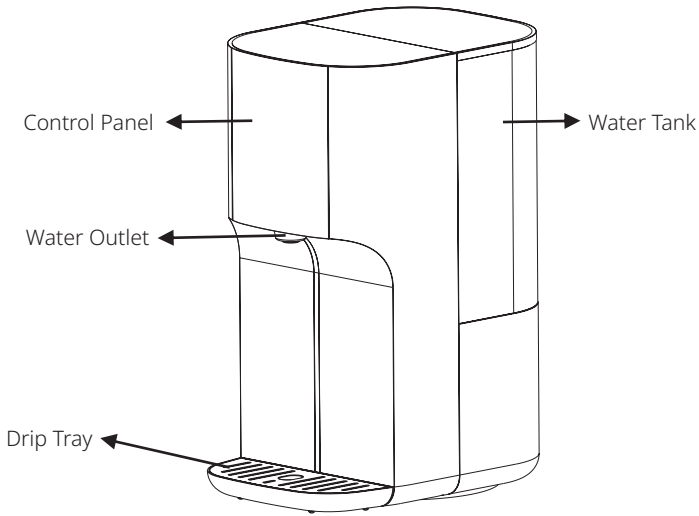
1. Read all instructions carefully before using and keep them for future reference.
2. This appliance is not intended for use by persons (including children) with reduced physical, sensory or mental capabilities, or lack of experience and knowledge, unless they have been given supervision or instruction concerning the use of the appliance by a person responsible for their safety.
3. Do not let the appliance come into contact with any hot surfaces.
4. The product should be placed on a horizontal countertop and is intended for indoor use only.
5. It should be kept in a dry, ventilated area, away from direct sunlight.
6. This appliance is intended for household and indoor use only.
7. Do not immerse the appliance, plug or power cord in the water or any type of liquid.
8. Children should be supervised to ensure that they do not play with the appliance, its parts and accessories.
9. Shut off the power and unplug the appliance when there are sparks while using it. Do not attempt to use the appliance again.
10. Do not disassemble or modify the product on your own. This may cause electric shock and injury.
11. Use original parts only, non-original parts may be dangerous and damage the appliance, and will also void the warranty coverage.
12. To disconnect the appliance, grip power plug and pull from power outlet. Never yank on power cord.

1. IMPORTANT GUIDELINES

13. Do not operate any appliance with a damaged cord or plug, or after the appliance malfunctions or has been damaged in any manner.
14. The use of extra attachments not recommended by the manufacturer may cause fire, electrical shock, or injury.
15. Only authorized service personnel should be allowed to undertake repairs on electrical appliances. Repairs undertaken by unauthorized persons may result in damage to the appliance and/or accidents or injury to the user.
16. Do not use this product to filter water that is microbiologically contaminated or of unknown quality unless it has been properly disinfected.
17. If the machine is not used for more than 72 hours, empty the remaining water from both the internal and external water tanks and disconnect the power supply.
18. For extended periods of non-use, unplug the power, empty the raw water tank, and drain any residual water inside the machine.
19. During temperature switching, the initial outlet water temperature may vary due to residual water in the pipeline. Pay attention to prevent burns and avoid touching the water outlet.
20. Regularly clean the water tank and the inlet and outlet areas to prevent sediment or scale buildup, which could obstruct the normal function of the machine.
21. Use only municipal tap water as the water source.
22. The machine has been pre-cleaned at the factory, but for hygiene reasons, it is recommended to clean it again before use. Discard the first 2 Liters of water produced.
23. Do not move the product while it is dispensing water to avoid spills and potential electrical hazards.



2. PARTS INTRODUCTION



3. TECHNICAL SPECIFICATIONS

Model	MO175BHAECO
Power	2100-2400W
Voltage	220-240V~ 50-60Hz
Water Treatment Process	<pre> graph TD TapWater[Tap - Water] --> RawWaterTank[Raw water tank] RawWaterTank --> SelfPrimingPump[Self-priming pump] SelfPrimingPump --> CompositeROMembraneFilter[Composite RO membrane filter] CompositeROMembraneFilter --> CombinationFlushValve[Combination flush valve] CompositeROMembraneFilter --> PureWaterTank[Pure water tank] PureWaterTank --> SuctionPump[Suction pump] SuctionPump --> HeatingModule[Heating module] HeatingModule --> ConcentratedWater[Concentrated water] HeatingModule --> PureWater[Pure water] PureWater --> WaterVaporSeparationBox[Water vapor separation box] </pre>
Type of Protection against electric shock	Class I
Water Tank Volume	4L
Product Dimension	297 x 200 x 400 mm (D x W x H)
N.W. / G.W.	5.3 kg / 7.4 kg
Inlet Water pressure	0-0.06 MPa
Work pressure	0.4-0.9 MPa
Inlet water temperature	5-38 °C
Environmental temperature	4-40 °C
Water filtration flow rate*	0.13 L/min
Filtration capacity	2000 L
Water heating capacity	≥12 L/h
Life of Filter	One year
Note	<ol style="list-style-type: none"> 1. After initial use or long-term shutdown, rinse according to the instructions when resuming use. 2. Regularly clean and replace the filter element (membrane) according to the instructions.



NOTE: The following data is derived from laboratory standard testing conditions:

1. Power Value Testing:

The power consumption values were tested under the following conditions: inlet water temperature at 20 °C, with the internal water storage tank emptied (approximately 1.3 litres). The outlet temperature was set to 100 °C.

3. TECHNICAL SPECIFICATIONS

2. Water Flow Rate Testing:

The net water flow rate of the machine was tested using a 25 °C, 250 mg/L NaCl solution. Please note that the water flow rate may fluctuate when the inlet pressure and temperature vary.

3. Laboratory Standards:

All tests were conducted in compliance with the requirements of the Health, Safety, and Functional Evaluation Specification for Drinking Water Quality Processors - Reverse Osmosis Treatment Devices (2001).

4. BEFORE THE FIRST USE

Key Features

- 1. Reverse Osmosis & UV Purification:** Ensures safe and purified drinking water.
- 2. Instant Heating:** Heats water only when needed, conserving energy.
- 3. Movable & Rotatable Design:** Allows flexible placement in various settings without the need for fixed water sources.
- 4. Temperature & Volume Modes:** Offers 4 temperature settings and 4 water volume options to cater to different needs.
- 5. Intelligent Prompts:** Provides alerts for filter replacement, water change, and other maintenance tasks.
- 6. One-Button Operation:** Simplifies usage with easy access to key functions.



Important Notes

1. Power Testing Conditions:

- a. Tested with an inlet temperature of 20 °C.
- b. The internal water tank (1.3L) was emptied before selecting a 100 °C water output.

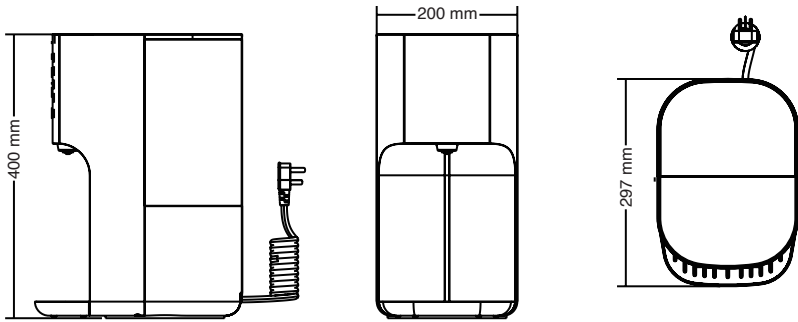
2. Water Flow Fluctuations:

Performance may vary based on inlet pressure and temperature when using a 25 °C 250mg/L NaCl solution.

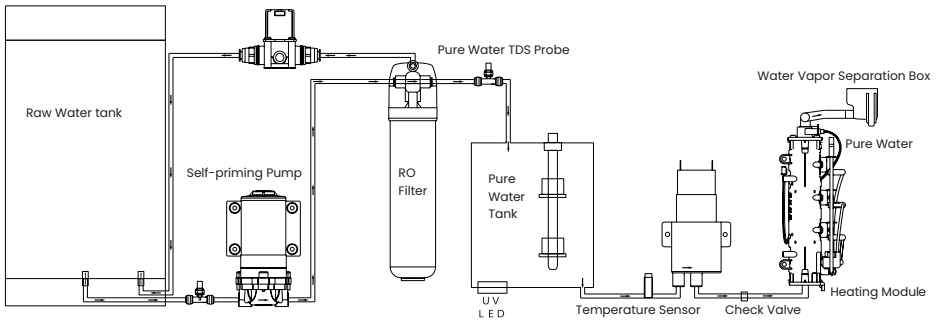
3. Filter Element Lifespan:

The lifespan is influenced by the water quality and usage in different regions.

5. PRODUCT DIMENSION (UNIT: MM)

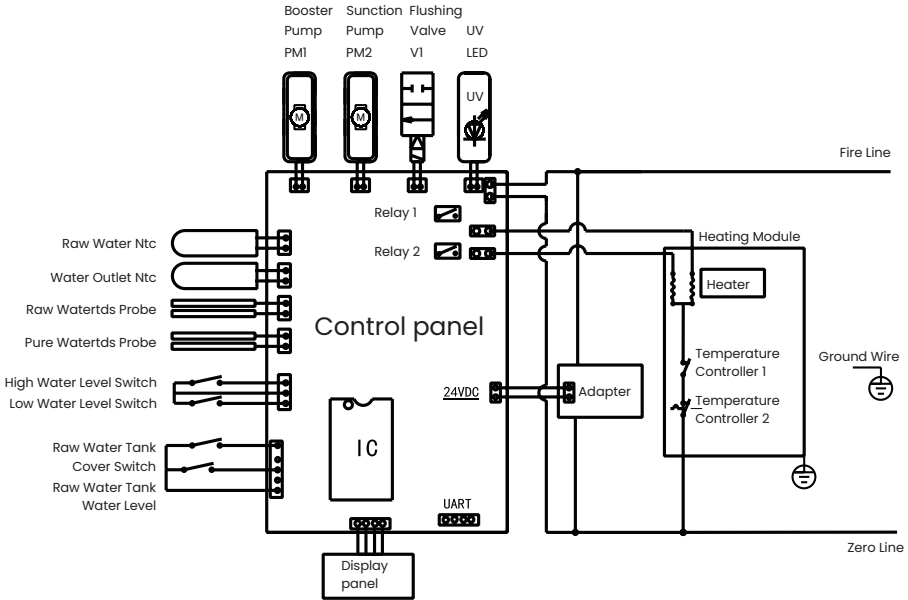


6. STRUCTURAL DIAGRAM AND HYDROGRAPHIC DIAGRAM





7. ELECTRICAL SCHEMATIC DIAGRAM



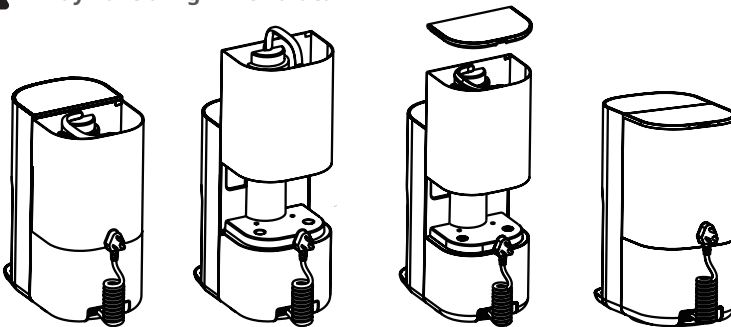
8. OPERATING INSTRUCTIONS

STEP 1: INSTALL THE RAW WATER TANK

1. Open the raw water tank lid and remove the raw water tank.
 2. Fill the raw water tank with tap water.
 3. Reinstall the raw water tank and close the lid tightly.
- Warning! If the lid is not closed properly, the device will not start.



ATTENTION: Always pour out the remaining raw water before refilling, as it may have a high TDS value.



8. OPERATING INSTRUCTIONS

STEP 2: POWER CONNECTION, FLUSHING, AND DEBUGGING

1. Connect the power supply. The filter will start filtration.
2. Dispense and empty full raw water tank. This is necessary to flush the filter.

Warning! Do not drink the water during the flushing process.



ATTENTION: The RO membrane is pre-loaded with moisturizing agents upon factory departure. To ensure optimal performance and to properly flush the internal and connecting pipelines of your system after installing a new machine or replacing the filter element, please follow these steps:

1. Initial Cleaning: Upon first use or after replacing the filter element, initiate the machine's cleaning cycle. Dispense and empty two raw water tank. This is necessary to flush the filter. Warning! Do not drink the water during the flushing process.

2. Water Production Testing: After completing the cleaning cycle, produce approximately 1 litre of water at room temperature and another 0.5 litre at 100 °C to verify system functionality.

Usage Note: Do not consume the produced water until all the above steps are fully completed. The water can be used for household cleaning during this period.

STEP 3: TAKING WATER

1. Place your container on drip tray.
2. Select the desired water temperature and volume using the touch button.
3. Press the "Water Dispense" button to dispense water.
4. For the first glass of water, it is recommended to dispense warm water first. This allows the heating tube to fill with water. If you choose to take hot water initially, please note that the first portion may not be heated properly.

WARNING!

When the filter is turned on for the first time in high-altitude areas, it will learn the local boiling point to ensure safe hot water dispensing. During this learning process, the water may come out in a spray state and at a relatively high temperature. This is normal and does not indicate any damage to the heating element. After the boiling point is learned, the machine will dispense hot water according to the local boiling point to prevent overheating and boiling dry.

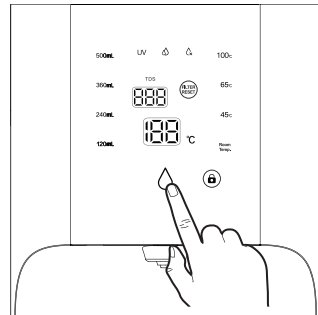
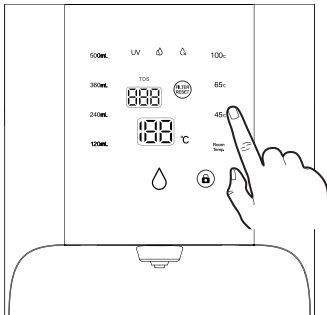


NOTE: During the dispensing process, you can stop the water flow by touching the "Water Dispense" button again.

8. OPERATING INSTRUCTIONS



NOTE: To dispense hot water at 45°C, 65°C and 100°C temperatures, first activate the “Child Lock” and then press the “Water Dispense” button. Note that if no further action is taken within 10 seconds after activating the “Child Lock,” the machine will automatically lock.

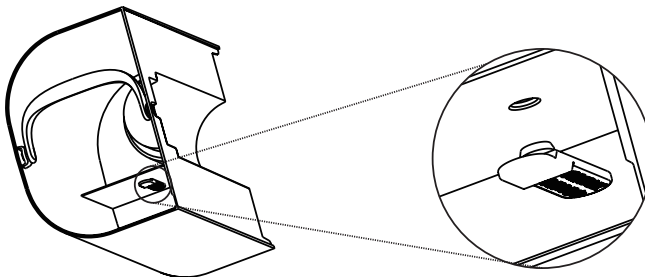


Water dispensing using a touch

WATER TANK SETTINGS BASED ON WATER QUALITY

Good Water Quality (TDS < 500): Remove the diversion plug for a 3.2L capacity. (Original water tank capacity 4 litres)

Poor Water Quality (TDS ≥ 500): Keep the diversion plug in place, limiting capacity to 2.8L. (Original water tank capacity 4 litres)



Diversion plug

9. CLEANING AND MAINTENANCE

EMPTY THE INTERNAL PURE WATER TANK



IMPORTANT: If this is your first time using the machine or if the machine has been idle for more than 7 days, it is recommended to empty the internal pure water tank to ensure the freshness and health of the drinking water.

STEPS FOR EMPTY:

1. Place a suitable water container on the water collecting tray.
2. Press and hold the 360mL, 65°C button for 5 seconds.
3. The machine will beep 3 times, signalling the start of the empty process.
4. The machine will empty all the water from the internal pure water tank until it is completely empty.



NOTE: Ensure the water container is large enough to collect all the water from the tank to avoid overflow.

WATER CHANGE

Change the water when the “water change” indicator is on.

Failure to do so will prevent the machine from starting the water production function.

SAFETY LOCK MODE

Deactivate: Press and hold the “safety lock” button for 10 seconds to cancel the safety lock.

Reactivate: Press and hold the “safety lock” button for 10 seconds again to restore the lock.

Warning: Deactivating the safety lock poses a burn risk when dispensing hot water.

INACTIVE MODE

The machine enters sleep mode after 1 minute of inactivity. It will wake up upon any button operation.

DAILY MAINTENANCE

Replace Water Promptly: According to the machine’s prompt, replace the water in the raw water tank promptly.

Clean the Water Tank Regularly: Regularly clean the water tank and remove any sediment, water alkali, or other debris at the inlet and outlet to prevent blockages and ensure the machine functions properly.

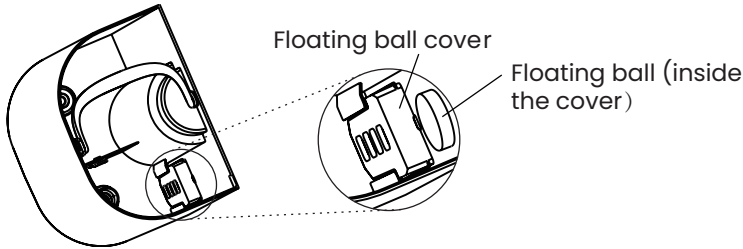
Clean the drip tray: Regularly clean the drip tray maintain hygiene and performance.

Replace the Filter Element: Purchase and replace the filter element as prompted by the machine. This ensures optimal water quality and machine performance.

Low Water Level: When the water level in the tank is low, it is recommended to change the water to maintain optimal machine operation.

9. CLEANING AND MAINTENANCE

Water Tank Cleaning: When cleaning the water tank, ensure the floating ball cover is assembled correctly. Proper assembly is necessary for the machine to operate normally. Refer to the diagram provided below for correct assembly instructions.



LONG BRAKE (>7 DAYS)

1. Empty the raw water tank and refill it with tap water.
2. Reinstall the raw water tank and close the lid tightly.
3. Empty the clean water tank – press and hold the 360 mL and 65 °C buttons for 5 seconds.
4. When the Change Water indicator lights up, dispense and empty a full raw water tank.
WARNING! Do not drink the water during the flushing process.
5. Empty the remaining water from the raw water tank and refill it with tap water.
6. The filter is now ready to use.

FILTER REPLACEMENT

Regular Replacement: Replace the filter element regularly according to the machine's filter element reminder to ensure continued performance.

Filter Status Indicators:

“Filter Reset” Light On: The filter will expire in about 2 weeks. Please purchase a replacement filter as soon as possible.

“Filter Reset” Light Flashing: The filter life has expired. Replace the filter immediately and reset the filter manually.

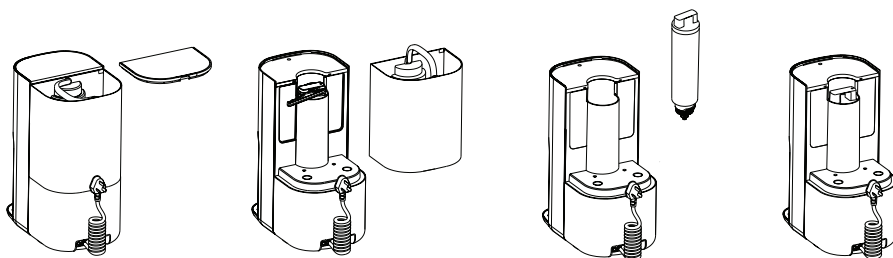
RO FILTER	MODEL	Suggested Replacement Cycle
Replacement filter for countertop reverse osmosis filter RAY	CSV175BHAECO	1 year or 2000 L

Due to variations in water quality and water consumption across different regions, the replacement cycle for the filter element may differ.

9. CLEANING AND MAINTENANCE

1. REPLACEMENT PROCEDURE:

1. Open the raw water tank cover and remove the tank.
2. Remove the top cover of the machine.
3. Use a small wrench to rotate the filter handle counterclockwise, then lift out the old filter.
4. Install the new filter, rotating it clockwise to lock it in place.
5. Turn on the machine and press the "Filter Reset" button for 5 seconds to reset.
6. Follow the initial flushing procedure after filter replacement.



NOTE: When replacing the filter, please disconnect the power and wait for 1 minute before replacing it.

10. TROUBLESHOOTING

NORMAL OPERATING CONDITIONS

The following states are not considered faults and are normal operating conditions:

Status	Explanation	Treatment
No display on the machine	The machine is not plugged in	Plug the machine into a power outlet
Standby mode after 1 minute	The machine automatically enters standby mode if not used for 1 minute	Press any button to wake up the machine
Running sound when not in use	The machine makes a running sound even when not dispensing water, as it is refilling the internal water tank	This is normal; no action required
Water production light on	The internal pure water tank is being replenished with water	Wait for the tank to finish refilling
Water change light on	The raw water tank needs to be refilled or the cover is not properly secured	Change the water and/or secure the cover

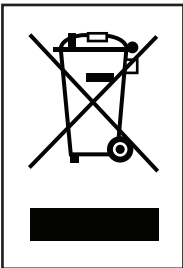
10. TROUBLESHOOTING

Status	Explanation	Treatment
Filter reset orange light on	The filter element is nearing the end of its life	Purchase a new filter element
Filter reset orange light flashing	The filter has expired	Replace the filter and reset the machine

COMMON FAULTS AND SOLUTIONS

If the machine experiences any of the following issues, follow the suggested solutions:

Status	Fault Cause	Treatment
Machine does not produce water	The raw water tank is not properly installed, or the cover is not correctly closed	Reinstall the original water tank, secure the cover, and check if the machine starts making water
	The floating ball is not installed or is missing	Reinstall the float ball and float ball cover, secure the water tank cover, and check the machine
Other faults		Please contact after-sales service for further assistance



This marking that this product should not be disposed with other household wastes throughout the nation. To prevent possible harm to the environment or human health from uncontrolled waste disposal, recycle it responsibly to promote the sustainable reuse of material resources. To return your used device, please use the return and collection systems or contact the retailer where the product was purchased. They can take this product for environmental safe recycling.

